

Chapter 13

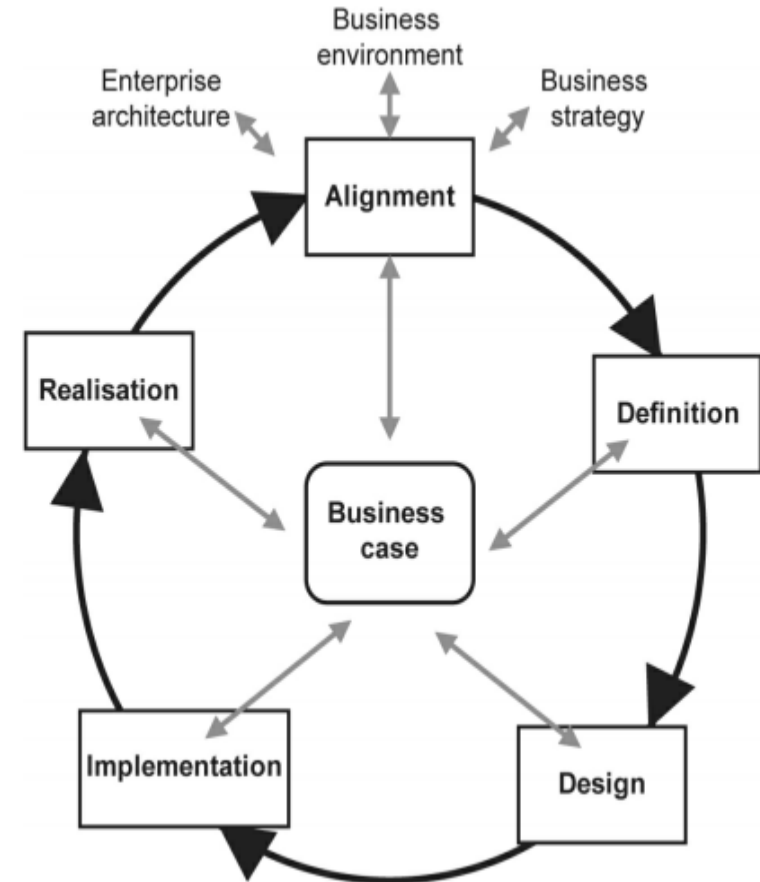
Delivering the requirements

BCS Foundation Certificate in Business Analysis
Courseware

Delivery Lifecycles

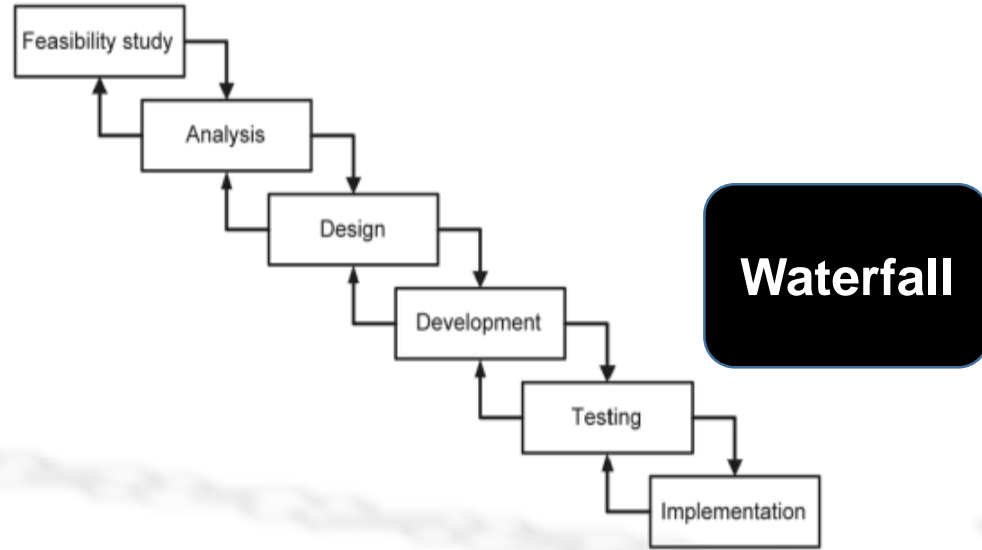
The major lifecycles in use are:

- The waterfall lifecycle;
- The 'V' model;
- The incremental lifecycle;
- The iterative lifecycle.

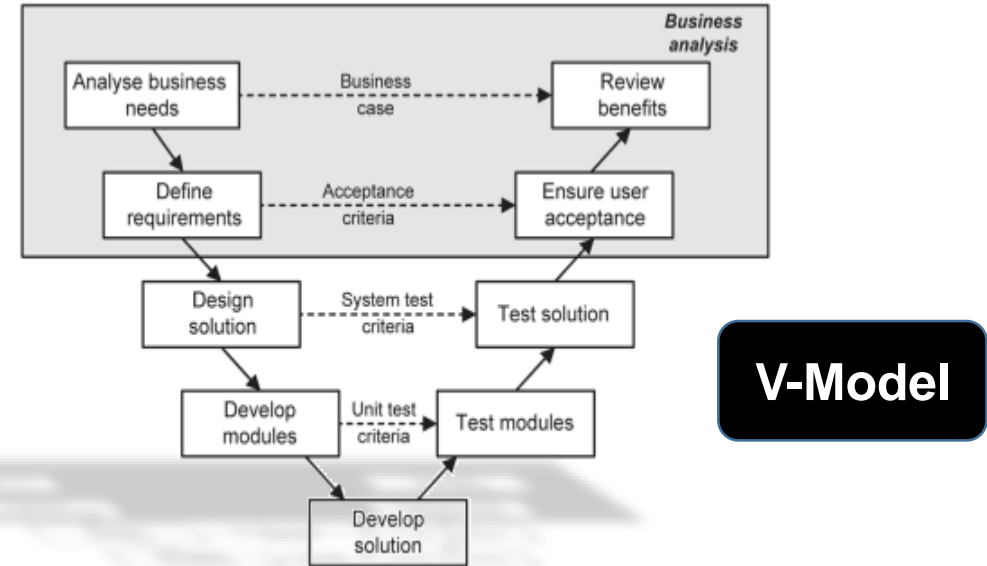


Business Analysis (4th Edition) Figure 1.1 (© Assist Knowledge Development Ltd.)

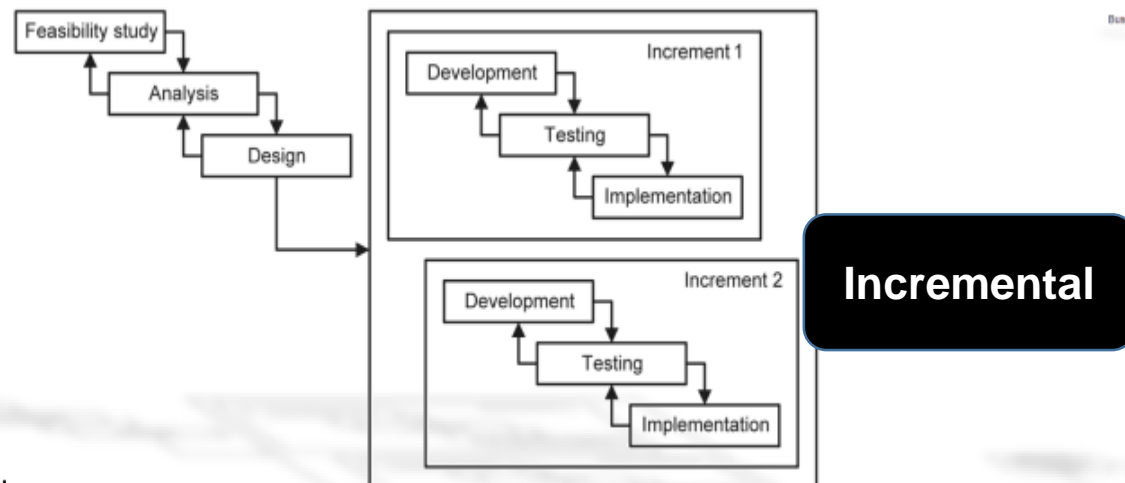
Delivery Lifecycles



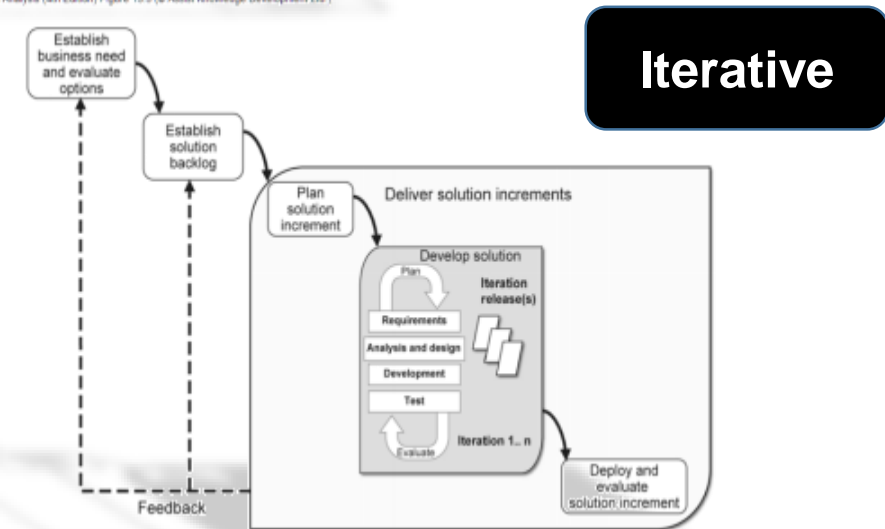
Business Analysis (4th Edition) Figure 13.3



Business Analysis (4th Edition) Figure 13.5 (© Assist Knowledge Development Ltd.)



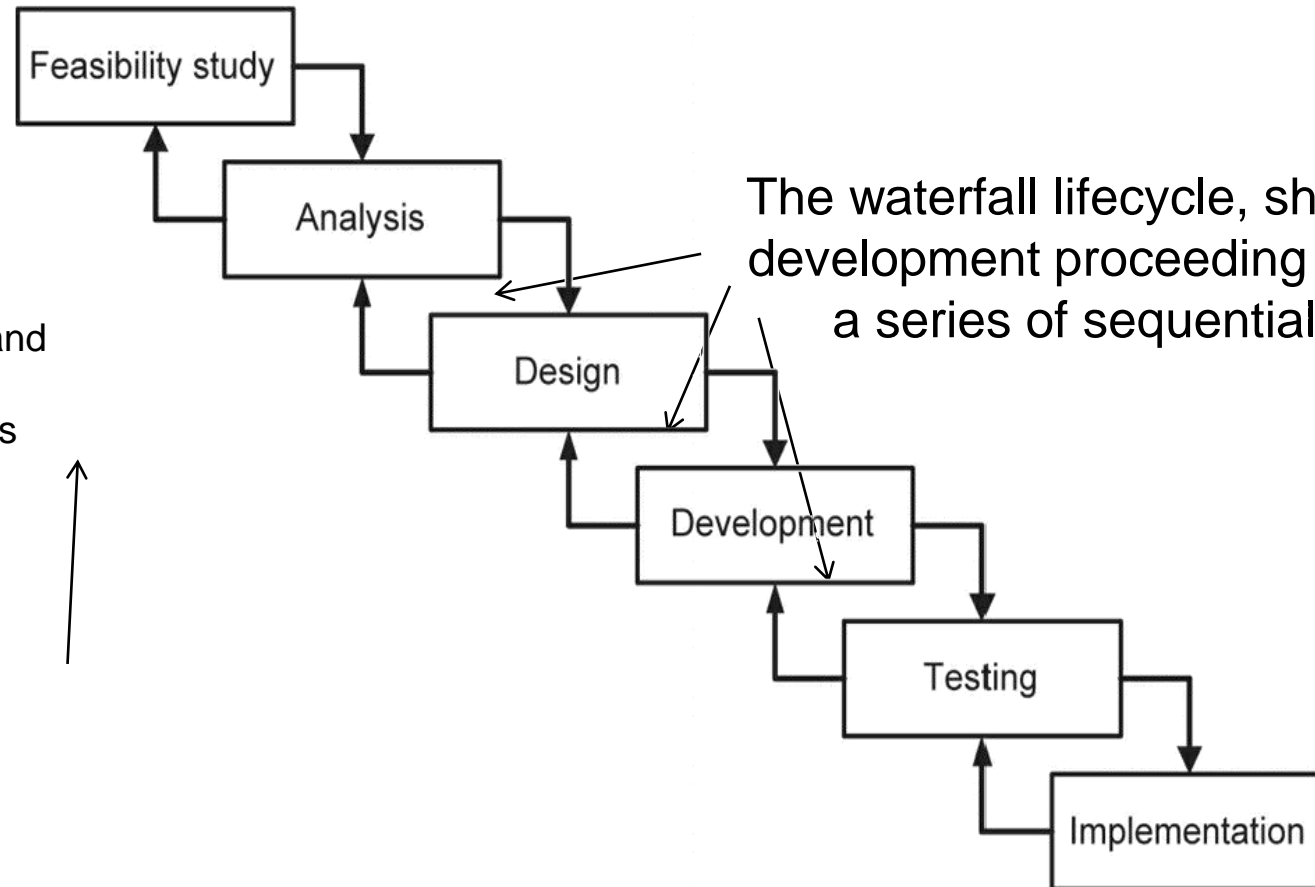
Business Analysis (4th Edition) Figure 13.6 (© Assist Knowledge Development Ltd.)



Business Analysis (4th Edition) Figure 13.8 (© Assist Knowledge Development Ltd.)

Delivery Lifecycles (Waterfall)

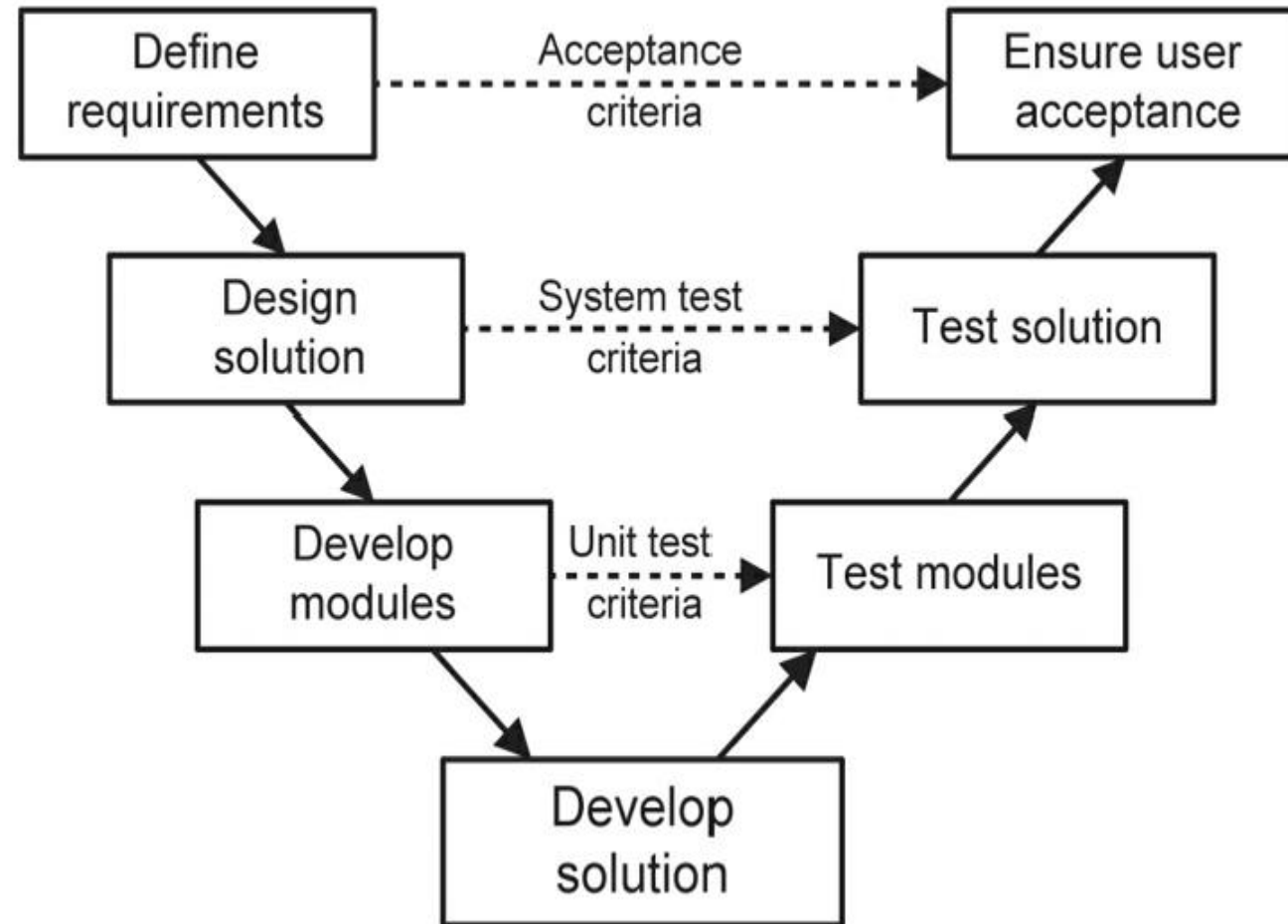
In theory, each stage is reviewed and signed off before the next starts. Thus, we should only begin analysis once a feasibility study has been approved.



Business Analysis (4th Edition) Figure 13.3

Delivery Lifecycles ('V' model)

The 'V' model is a variant of the waterfall model and consists of similar stages and sequence of the work.



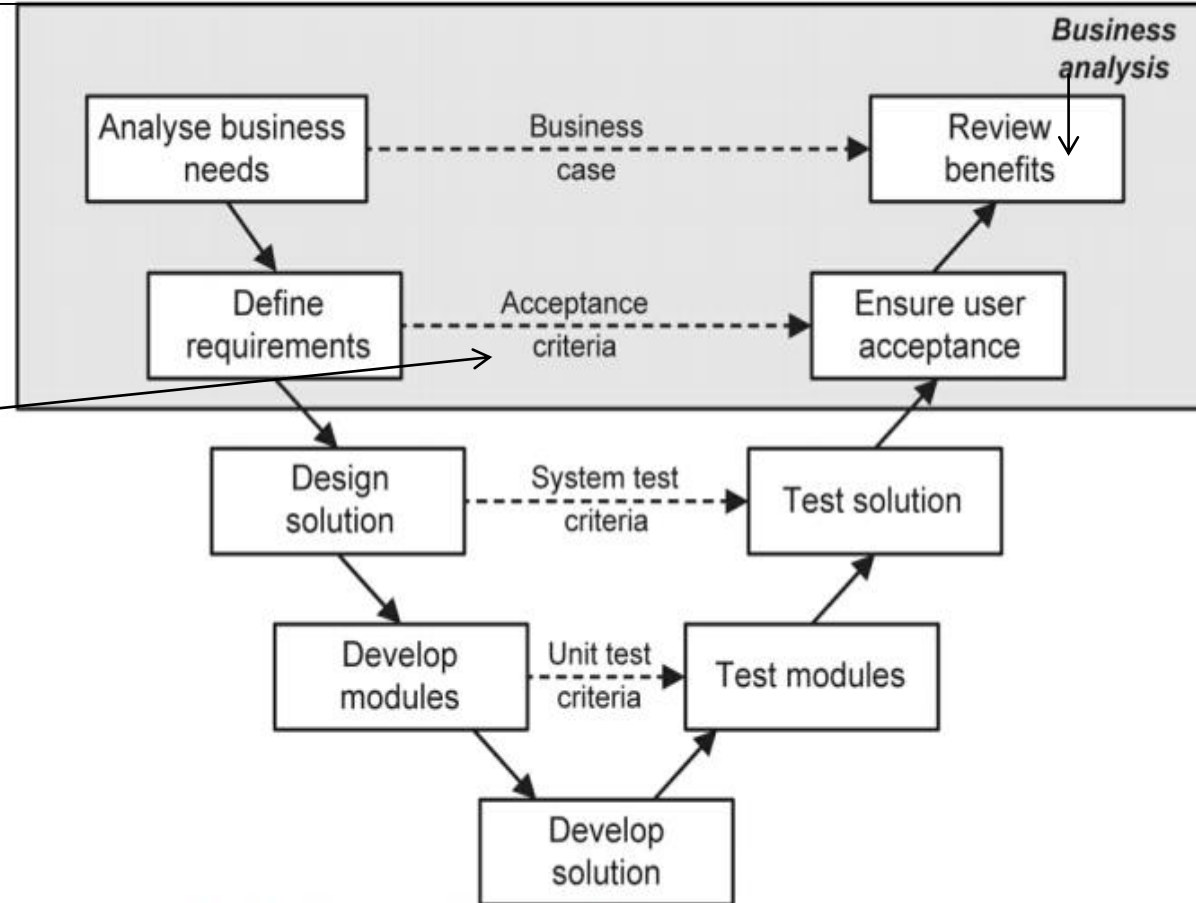
Business Analysis (4th Edition) Figure 13.4

- While the 'V' model is based upon the same principles as the waterfall lifecycle, in effect the waterfall has been bent back on itself following the development activity.

Delivery Lifecycles (Extended 'V' Model)

The waterfall has been bent back on itself following the development activity. This adds another dimension, **showing explicitly the connection between the earlier – developmental stages of the project and the later – testing – stages.**

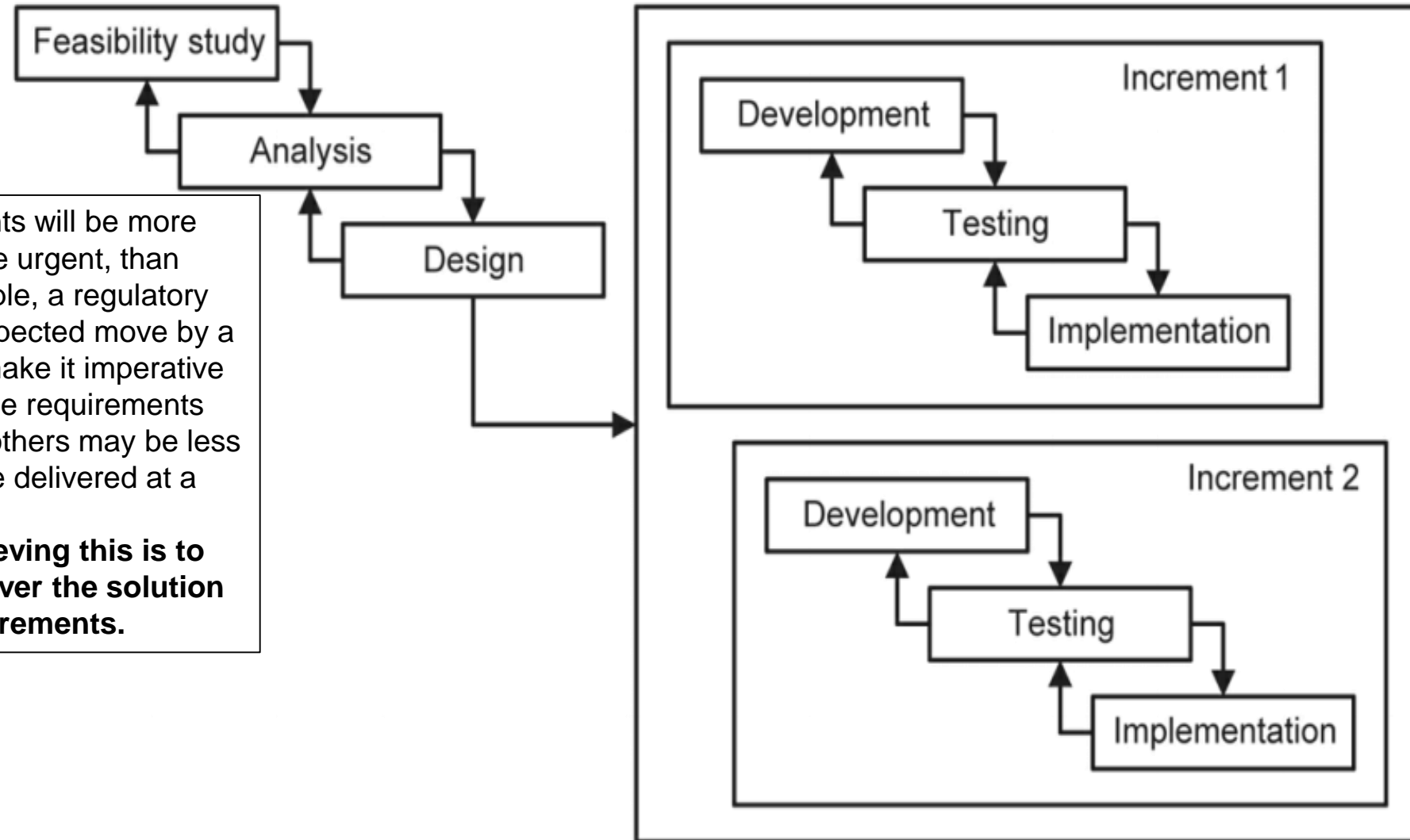
In particular, the test criteria is made explicit at each stage, for example, showing how the acceptance criteria should be defined as part of the requirements documentation and used during user acceptance testing.



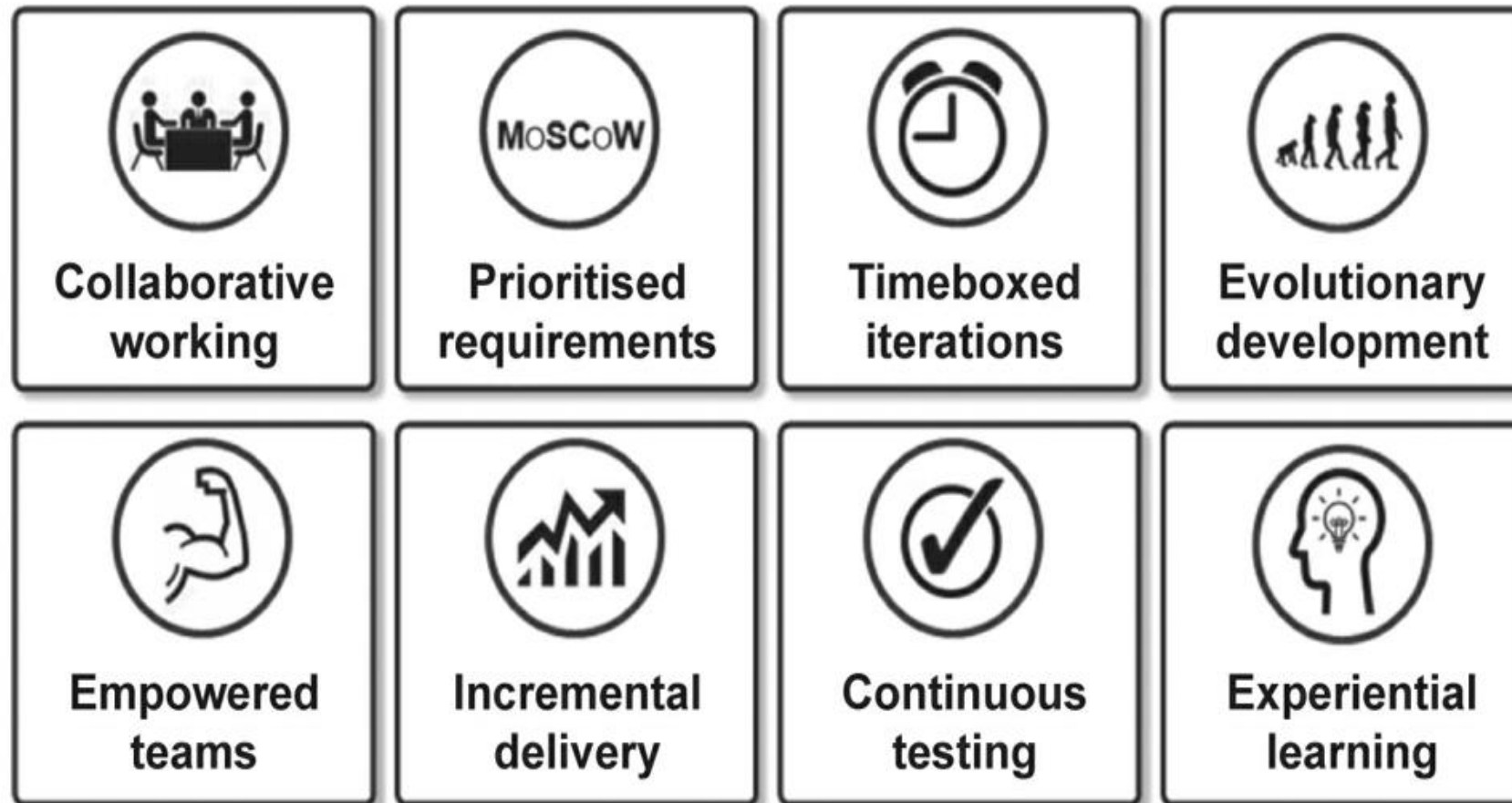
Delivery Lifecycles (Incremental)

Some requirements will be more important, or more urgent, than others. For example, a regulatory deadline or an expected move by a competitor may make it imperative to implement some requirements quickly whereas others may be less urgent and can be delivered at a later point.

One way of achieving this is to develop and deliver the solution in a series of increments.

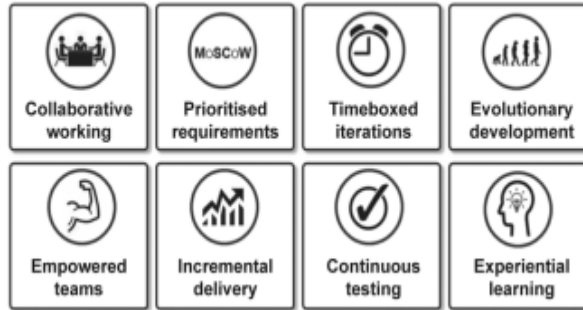


Delivery Lifecycles (Iterative lifecycle (Agile))

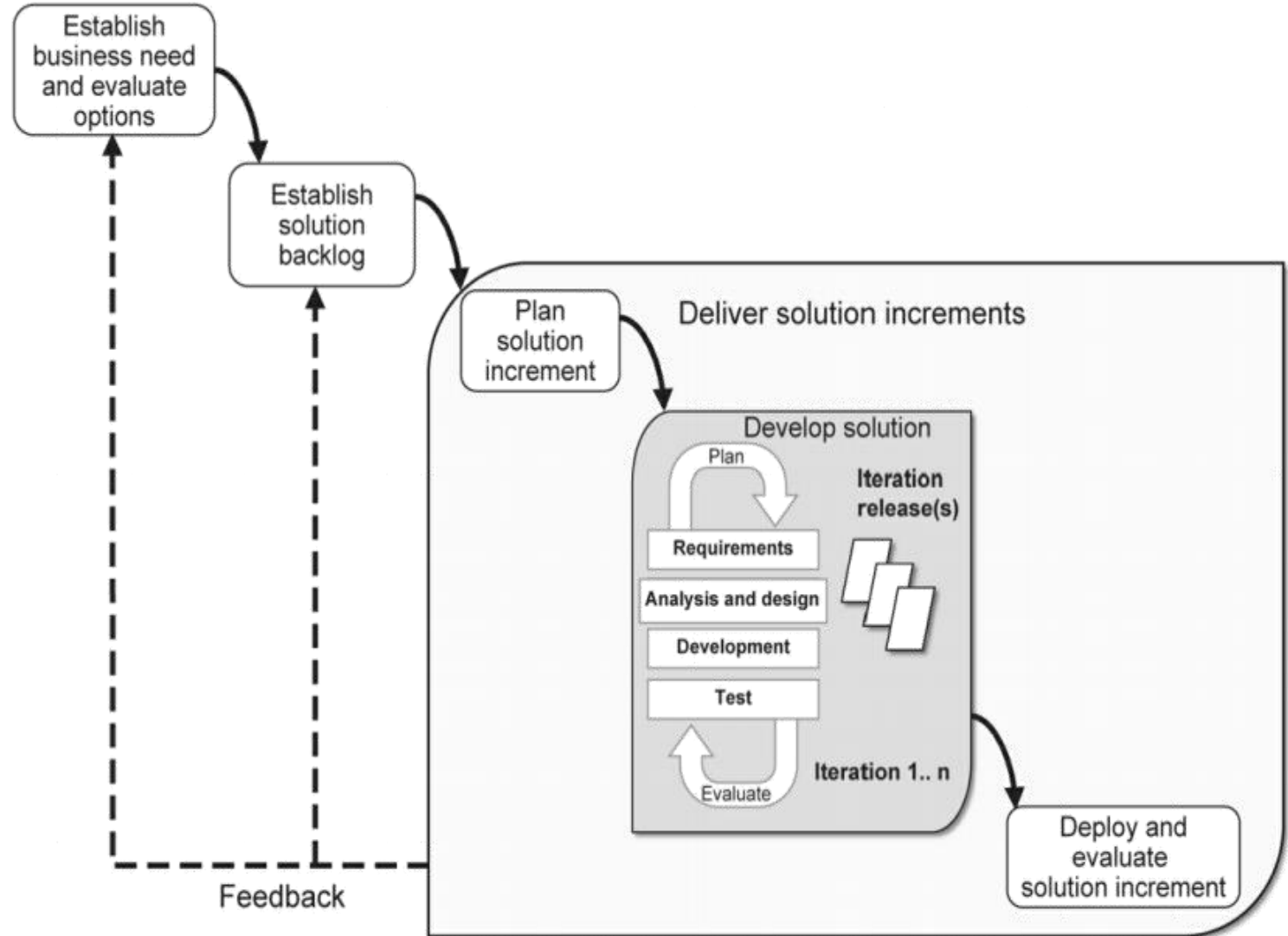


Business Analysis (4th Edition) Figure 13.7 (© Assist Knowledge Development Ltd.)

Delivery Lifecycles (Iterative lifecycle (Agile))



Business Analysis (4th Edition) Figure 13.7 (© Assist Knowledge Development Ltd.)



Business Analysis (4th Edition) Figure 13.8 (© Assist Knowledge Development Ltd.)